



Cognitive & QEEG



Somatic & HRV

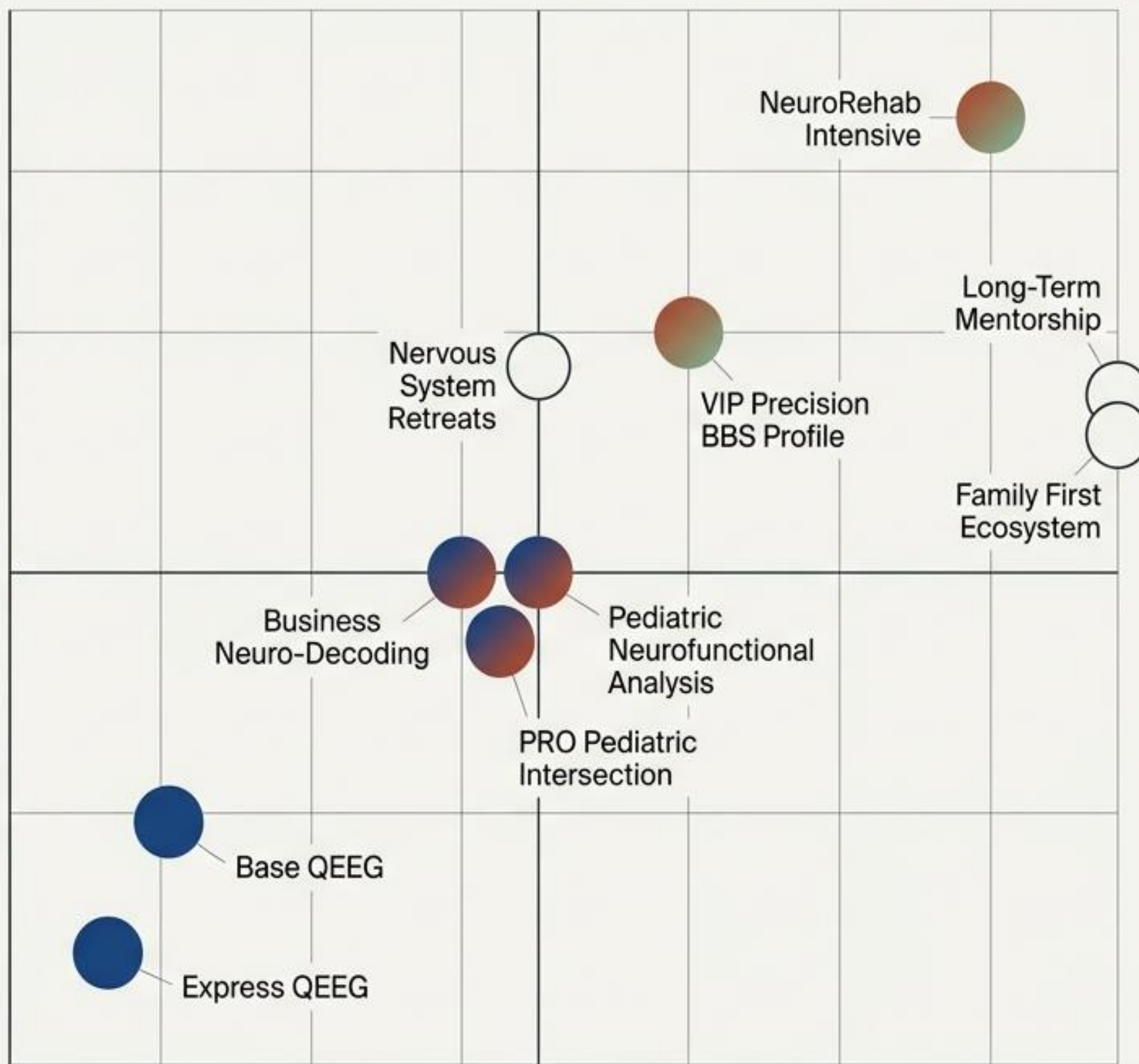


Strategy & Consultation

# The Precision Diagnostics Portfolio

A systematic approach to cognitive optimization, scaling from rapid neurological snapshots to immersive, multimodal rehabilitation

Diagnostic Depth & Intervention  
(Surface Insight to Full Multimodal Integration)



**X-Axis**  
Time & Investment (30 Minutes to 3 Weeks)

DURATION  
30 Minutes

INVESTMENT  
€400

LOCATIONS  
Cyprus, Israel,  
Worldwide at  
your events

# Neuro Snapshot: Express QEEG



## The Scan

30-minute rapid brain activity mapping. No tests, no consultations. Pure, precise raw data capturing your current neurological baseline.

## The Output

A highly visual PDF brain map analyzing wave balance, regional synchrony, and hemispheric symmetry. Delivered in English.

## The AI Edge

Written developmental recommendations generated by artificial intelligence within one week of testing based on your unique neural patterns.

Target Profile: Ideal for wellness retreats, corporate days, and 6-month progress tracking. Ages 18+.



## Upgrade Path

Personal interpretation available upon upgrade. Additional HRV requires secondary physical visit.

# Comprehensive QEEG & Nervous System Baseline

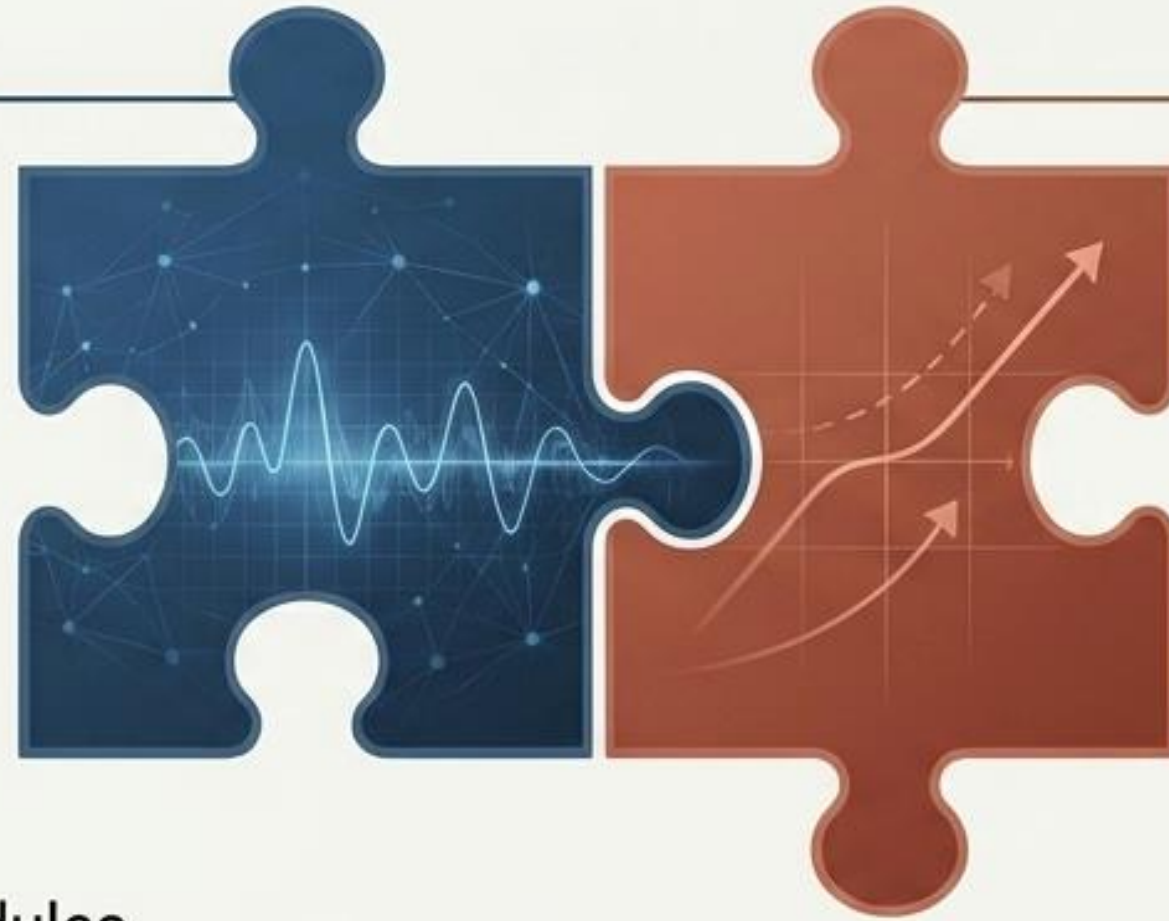
DURATION  
2 Hours

INVESTMENT  
€1,000

## Diagnostic Phase (1 Hr)

Full QEEG brain mapping compared to normative age databases.

Full HRV somatic report identifying your optimal physiological breathing rhythm.



## Synthesis Phase (1 Hr)

In-person or Zoom consultation.

Delivery of a step-by-step recovery and neuro-developmental strategy based exclusively on empirical data.

## Add-On Diagnostic Modules



### Cognitive Expansion

Deep-brain LORETA analysis and executive function testing.  
+€250 / +30 Mins.



### Priority Processing

Standard delivery is 7-14 days.  
**Expedite:** 3-Day Turnaround (+30%)  
**Rush:** 24-Hour Delivery (+50%)

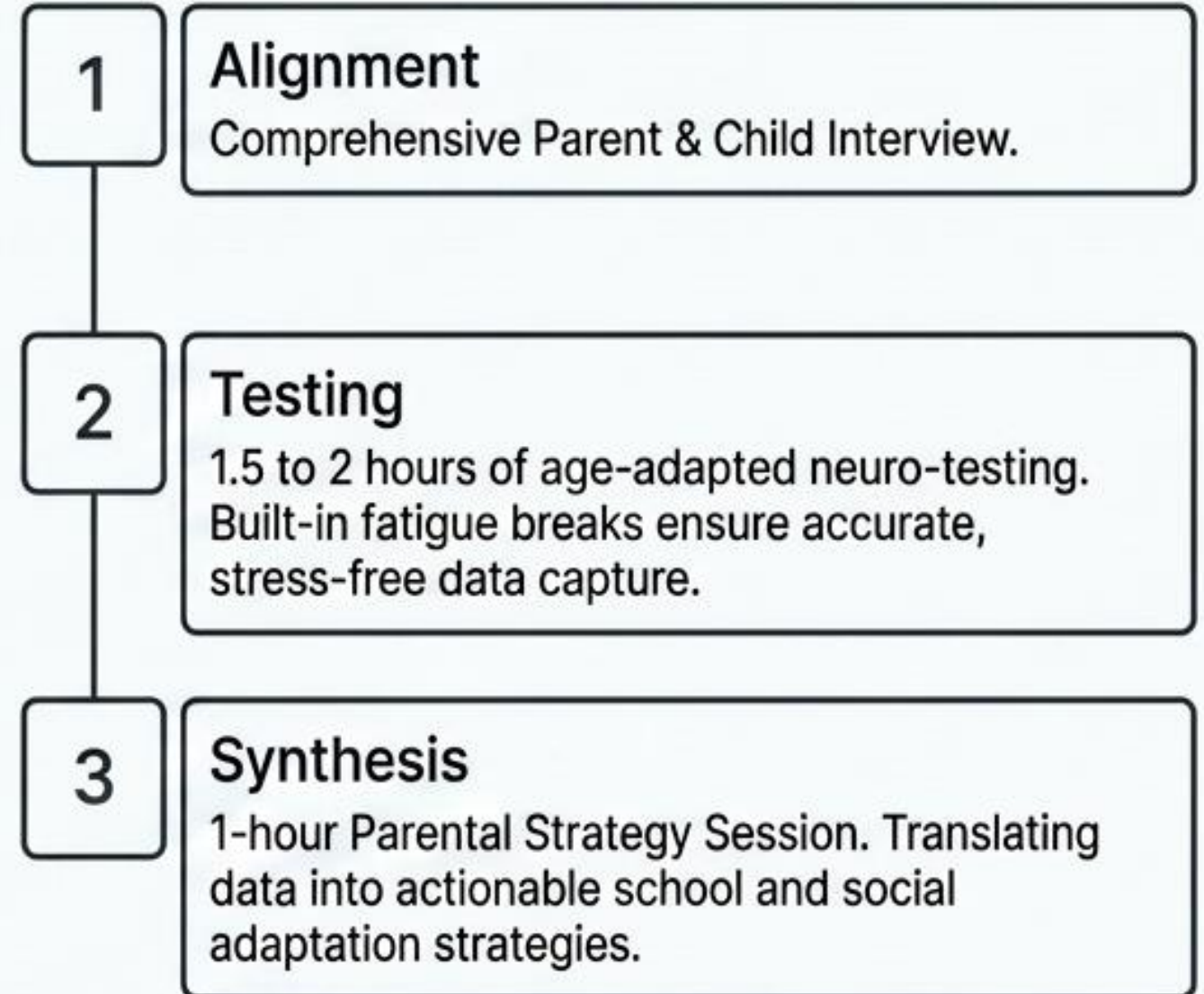
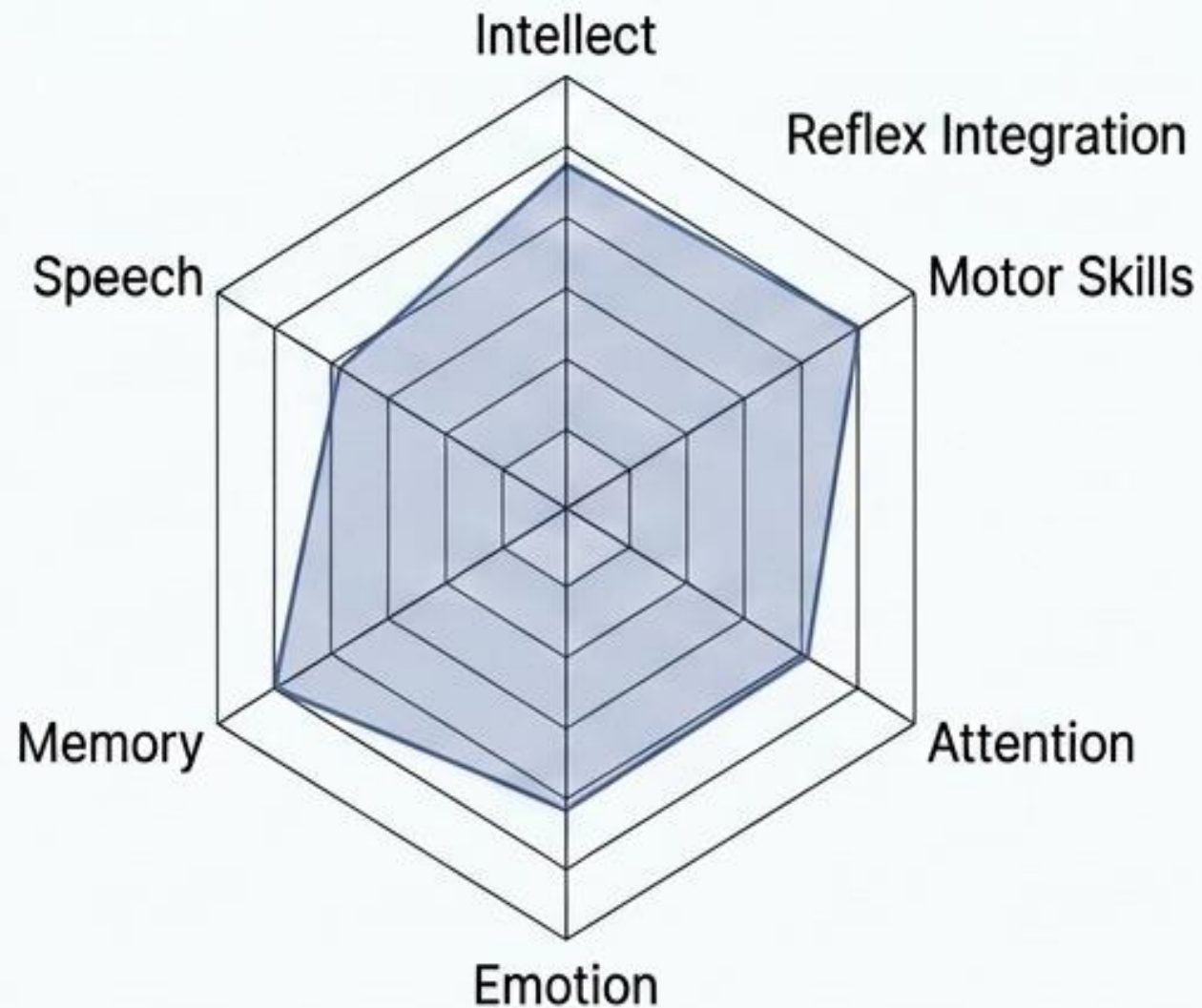
LOCATIONS  
Cyprus, Israel

# Pediatric Neurofunctional Analysis

DURATION  
3 Hours

INVESTMENT  
€750

LOCATIONS  
Cyprus,  
Online



**Diagnostic Focus:** Evaluates primitive reflex integration, visual-spatial perception, executive functions (planning, self-control), and academic readiness (reading speed). Designed to reveal hidden potential and uncover the true root of learning or behavioral difficulties for ages 0-18.

# PRO: The Complete Pediatric Intersection

DURATION

5 Hours

INVESTMENT

€1,500

LOCATIONS

Cyprus, Israel

Full QEEG & HRV Mapping  
(€1,000 / 45m)

Neurofunctional Analysis Battery  
(€750 / 2h)

LORETA Deep Structure & Cognitive QEEG\*  
(+€250 / 30m)

\*Cognitive QEEG starting from 7-8 years

Expert Parental Consultation (1h)

**Total Individual Value: €2,000.**  
**PRO Package Investment: €1,500. (Save €500)**

## Clinical Logistics & Promise

**Execution:** Can be split seamlessly across two days or completed with a mandatory 60-minute break to protect child stamina.

**Commitment:** Total expert commitment behind the scenes reaches 6-7 hours per case. Minimum age constraint: 5-6 years.

**The Guarantee:** An investment in the whole family's peace of mind, moving definitively beyond symptom management to a crystal-clear, empirical map of the child's nervous system.

# Adult QEEG + Business Neuro-Decoding

PRO Package for Executives, Founders, Creatives, and IT Leaders.

DURATION  
3 Hours

INVESTMENT  
€1,500

LOCATIONS  
Cyprus, Israel,  
Ukraine, Online

## Cognitive Load (QEEG)

Maps overactive versus underactive brain zones, correlating raw data directly to behavioral patterns, cognitive fatigue, and clinical burnout markers.

## Somatic Resilience (HRV)

Tests physiological recovery capacity, visual-motor balance, primitive reflexes, and deep muscular tension patterns. Evaluates the body's physical tolerance for stress.

## Strategic Execution

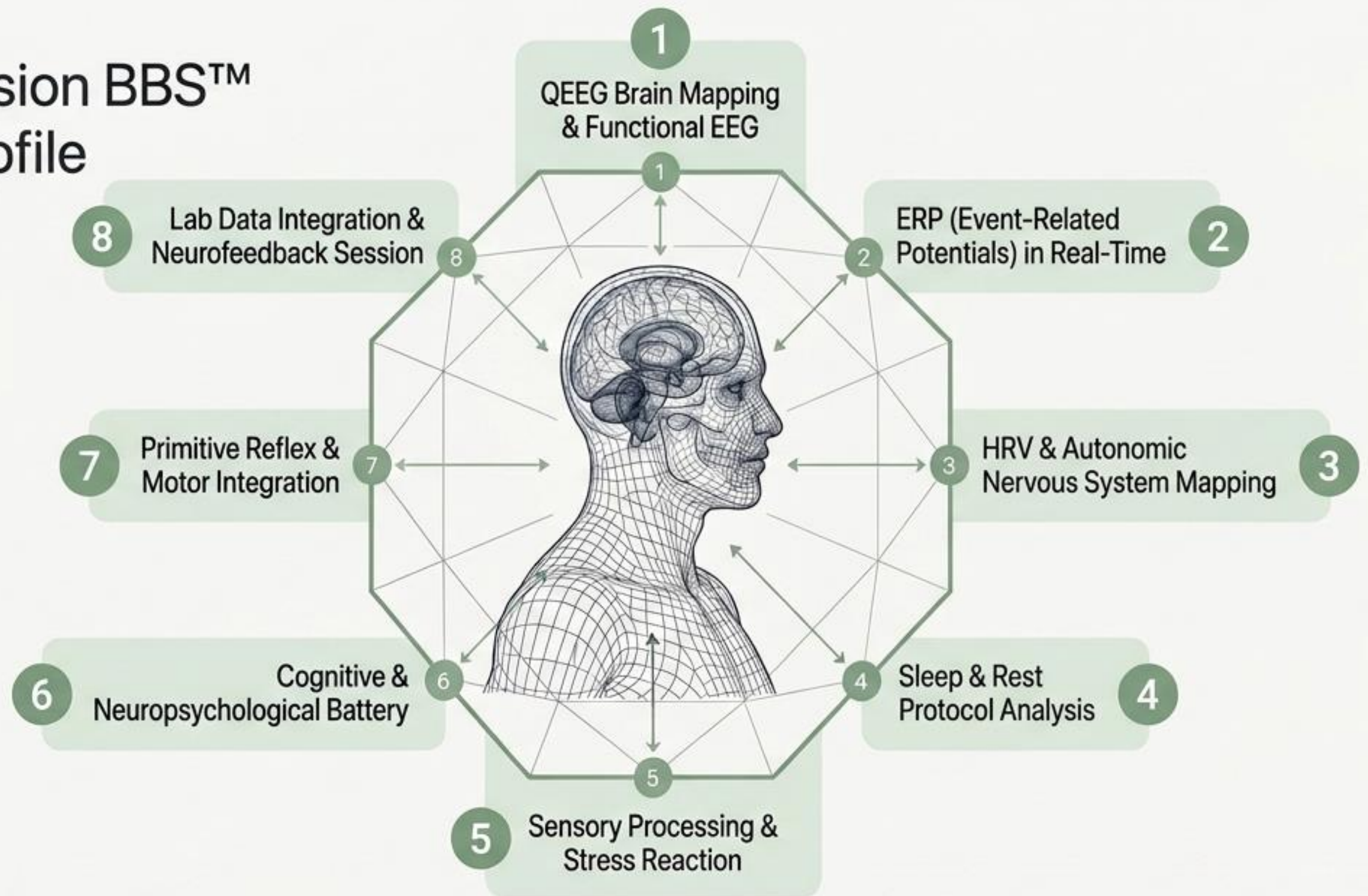
A scientifically grounded personal neuro-plan and deep-dive consultation with Yuliya Tolpyhina to restore autonomic balance. This is not generic coaching; this is neuroscience.

## Total Expert Commitment

6-7 Hours

Total expert labor behind the scenes. Includes data processing, LORETA analysis, and strategy formulation. Standard 7-14 day delivery with 24-hour and 3-day expedites available.

# VIP Precision BBS™ Neuro Profile



DURATION

8 Hours

INVESTMENT

€6,500

LOCATIONS

Cyprus, Israel

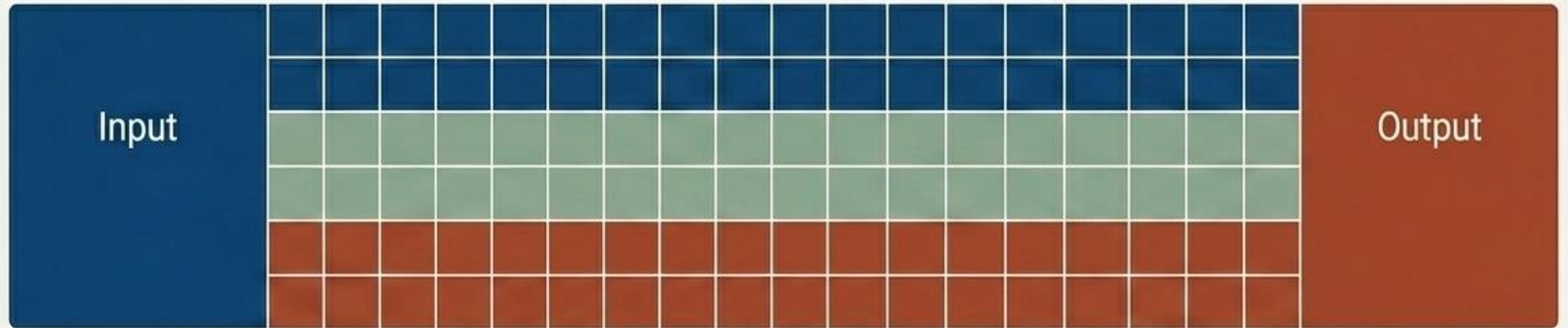
## The Differentiator

Fundamentally rejects symptom-oriented approaches. Precisely measures how the entire nervous system regulates, adapts, and recovers under immense load. Includes 1-day express analysis.

## The Output

A personalized, AI-based functional twin of the nervous system. Used by executives and clinical specialists for long-term precision tracking and immediate early intervention.

# NeuroRehab Intensive



## DURATION

3 Weeks / 15 Days  
(5 days/week) -  
65 Hrs

## INVESTMENT

From €15,000

## LOCATIONS

Israel

### Phase 1:

4-5 hour baseline establishment using the PRO Neurodiagnostics suite (QEEG + CogEEG + HRV).

### Phase 2: The Core: 15 Days of 4-Hour Interventions (5 days/week)



**Brain Track:** 15 Neurofeedback Sessions, 10 Cold Laser (LLLT) treatments, 15 HRV/Biofeedback integrations.



**Body Track:** 15 Osteopathy/Somatic sessions, 30 specific neurorehab motor exercises (reflex, vestibular).



**Support Track:** Nutritionist consultation and 10 targeted Art/Sound therapy sessions.

### Phase 3:

Final QEEG to visualize concrete neurological progress, paired with a custom home-home-continuity plan.

\* Note: This is an approximate program. The exact schedule and interventions can be adjusted after the initial assessment.

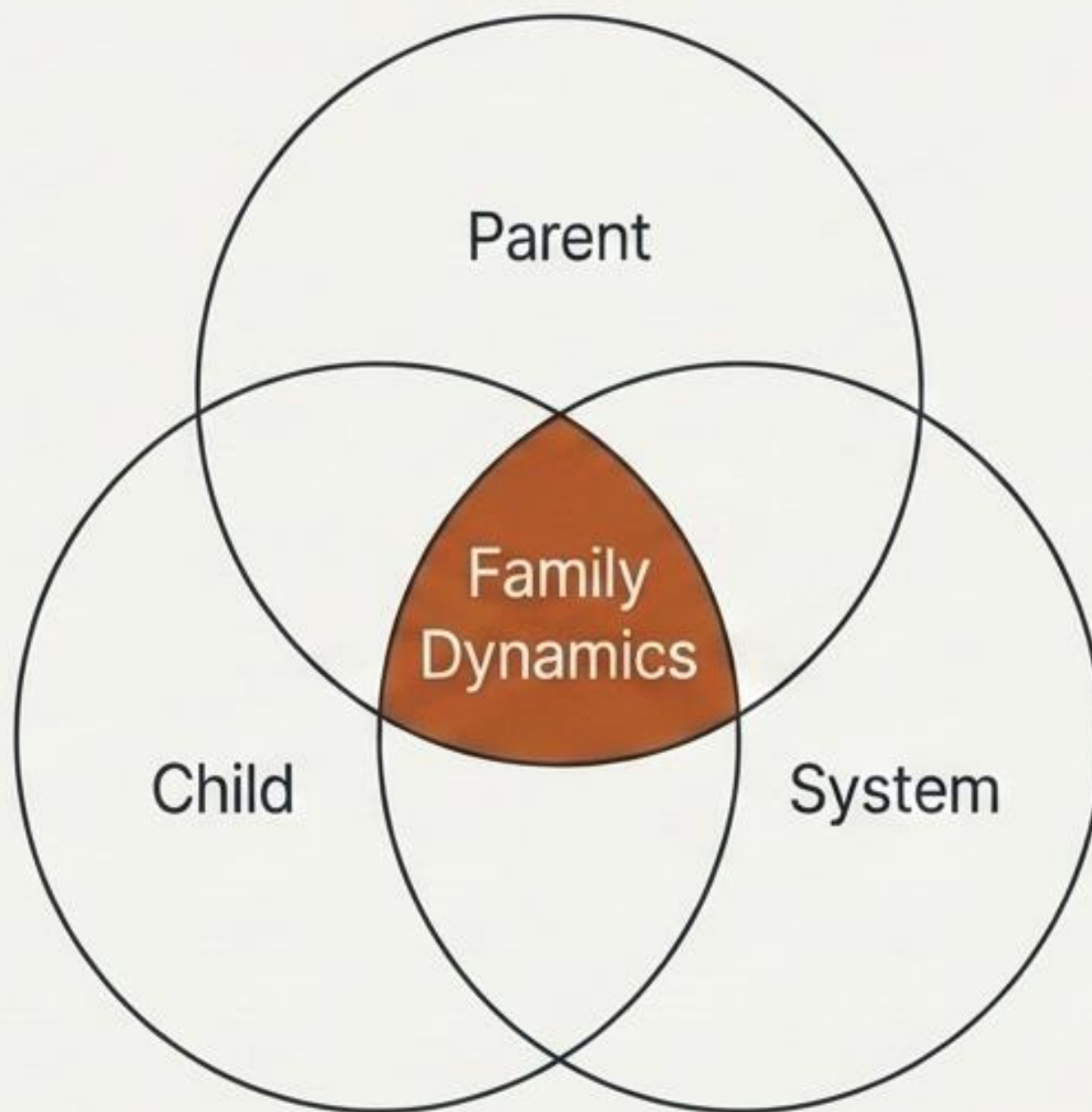
**Premium Logistics:** Strictly limited availability. Includes VIP queue jumping for extra consultations and continuous WhatsApp guidance.

# Family First Ecosystem Package

Total time of duration 6 hour - 3 hours recording + 3 hours consultation after report creation

## Per-Person Allocation

Designed as an in-person package for three family members. Each individual receives 1 hour of QEEG+ testing followed by a 1-hour personal consultation delivering strategic recommendations. LORETA deep-structure add-ons available (+€250/+30m).



## Clinical Application

A systemic intervention designed to systematically stabilize the household emotional background. Uncovers biological friction points to provide empirical support through trauma, divorce, behavioral challenges, or acute family crisis.

DURATION

Total time of duration

INVESTMENT

€2,700 (Save €300)

LOCATIONS

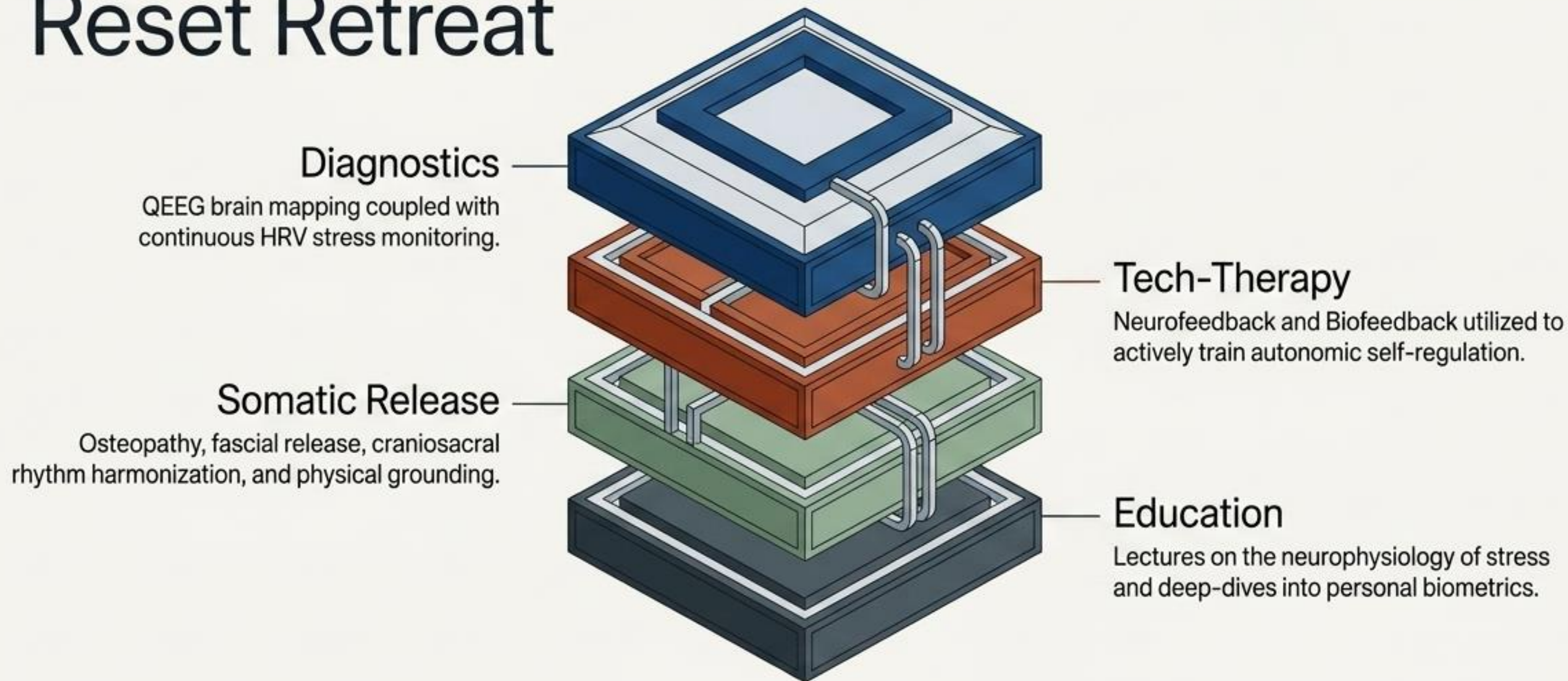
Cyprus, Israel

DURATION  
10 Hours

INVESTMENT  
On Demand

LOCATIONS  
Israel, Global

# Nervous System Reset Retreat



Target State: Transitioning chronic stress and executive burnout into deep parasympathetic recovery and sustained cognitive clarity. Specifically tailored in partnership with global organizers for healthcare workers, corporate leaders, and post-crisis recovery.

# Long-Term Developmental Mentorship

The Foundation: Every engagement kicks off with the 4-5 hour PRO diagnostic testing suite to establish absolute, empirical baselines.

DURATION  
16 Hours

INVESTMENT  
€5,550

LOCATIONS  
Online,  
Cyprus,  
Israel



## The Ecosystem Support

Includes dynamically evolving home-exercise regimens that scale with the child's progress, direct WhatsApp access with a strict 24-hour response time, and priority booking rights for supplementary interventions.

DURATION

1-3 Hours

INVESTMENT

€800 - €1,500+

LOCATIONS

Remote, VIP  
Mobile

# Precision Edge-Cases: External Data & Mobile Clinics

## External QEEG Interpretation

€800 / 1 hr Zoom + Report

Rigorous analysis of external .edf files with empirical precision.

**The Quality Guarantee:** Exclusively accepts recordings from Tolpyhina Neuro School alumni or a trusted clinical network. This strict policy ensures standardized recording protocols, flawless montage execution, and accurate artifact filtering. Total expert time: ~3 hours.

## Mobile QEEG Diagnostics

From €1,500 / 3 hrs

VIP deployment of diagnostic equipment and clinical personnel directly to your home or corporate office.

Logistics: Requires a minimum of 2 patients domestically within Israel, or 6 patients internationally. Urgent or solo deployments are explicitly billed at a 2x premium rate.

# The Professional Ecosystem

## DURATION

Custom

## INVESTMENT

Variable

## LOCATIONS

Global, Online,  
CY

### Corporate & Keynote Speaking

**Mainstage Keynotes:**  
Starting from \$5,000.  
**Seminars and Interactive Workshops:** \$1,000/hr.  
(Note: International deployments require a \$5k / 6hr minimum plus T&E).

### Specialist Mentorship & Supervision

**9-Month Cohort (€1,500):** 18 bi-weekly 2-hour sessions limited to 4-8 alumni specialists.

**1:1 Direct Supervision (€300/hr)** for active practitioners requiring expert case review.

### Institutional Support

On-demand, structural consulting for schools, kindergartens, and developmental centers. Designed to systematically integrate empirical neuro-principles into curriculum design and the physical learning environment.

# Precision. Regulation. Optimization.

**Moving definitively beyond psychology and symptom-management into the empirical science of the brain, body, and nervous system.**

## Terminal

Hub 01: Jerusalem, Israel (+972 53 301 7590)

Hub 02: Cyprus (+972 53 301 7590)

Hub 03: Ukraine, My Family Montessori (+380 95 500 87 89)

Digital Vector: [yuliyatol@gmail.com](mailto:yuliyatol@gmail.com) | Telegram: [@Tolpyhina\\_Neuro\\_School](https://t.me/Tolpyhina_Neuro_School)